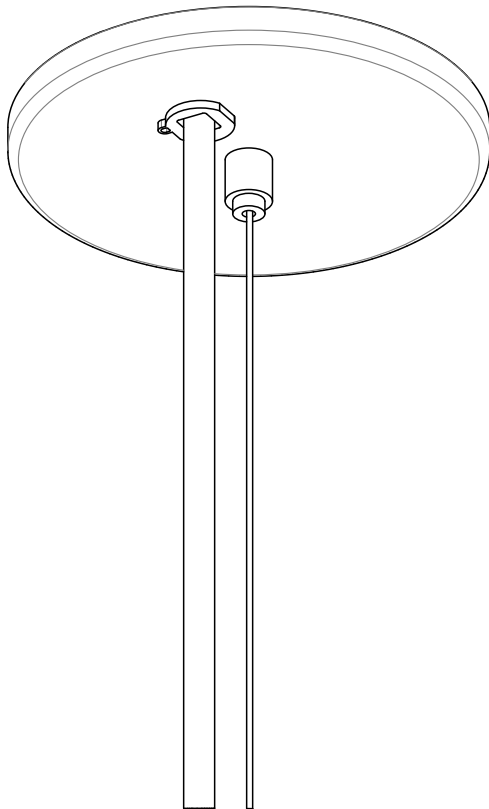


Flat Canopy

13496 rA

Round
Cable Coupler



CAUTION:

Before starting, turn off power
at main circuit panel.

ADVERTENCIA:

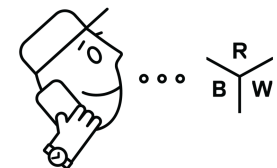
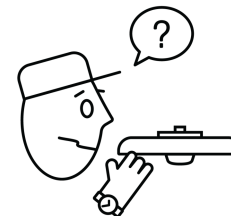
Antes de comenzar la instalación,
apague la corriente en el tablero
principal.

ATTENTION:

Coupez l'alimentation avant de
procéder à l'installation.



Calling for backup? Scan above
to contact our team.

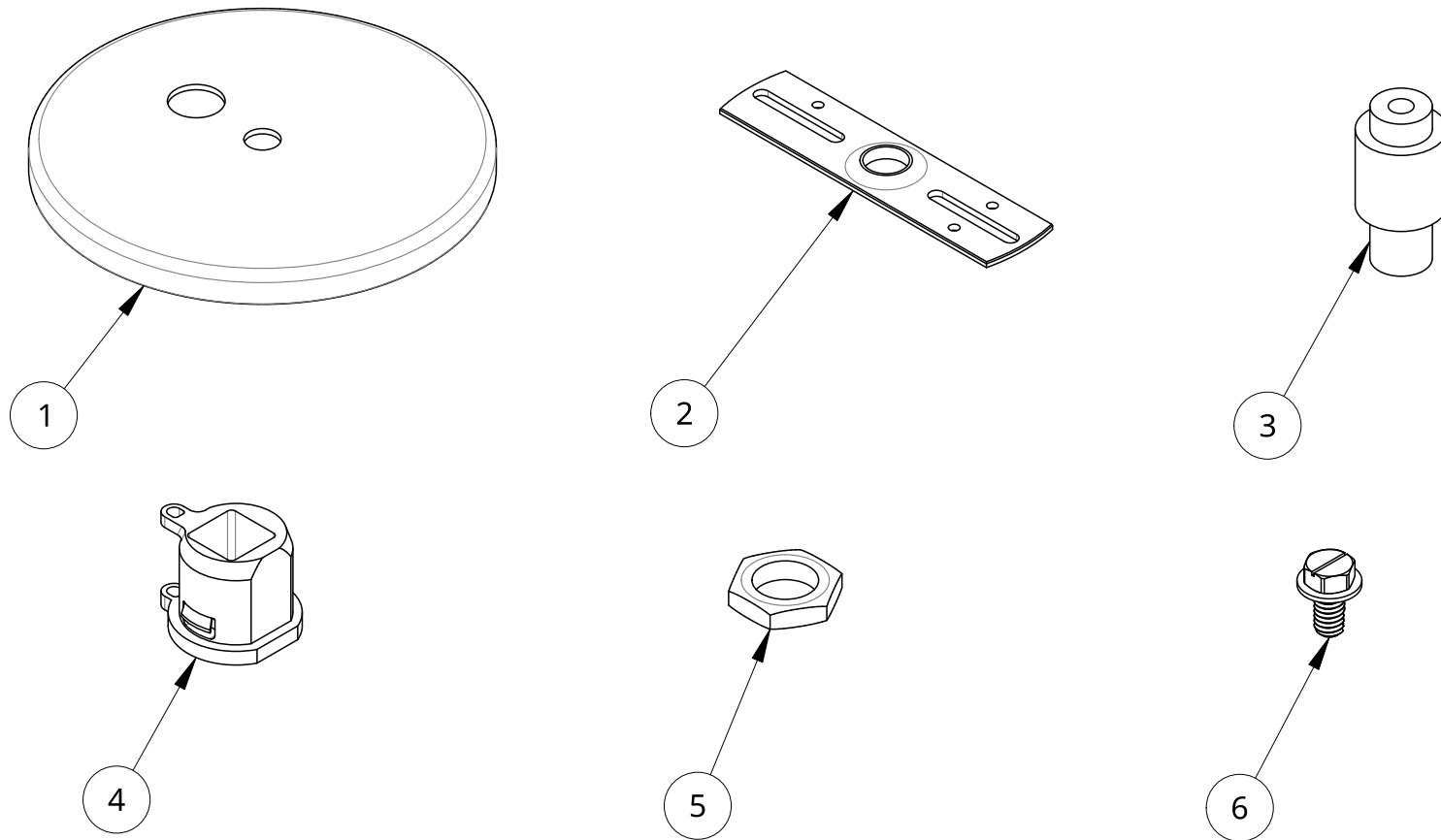


www.RBW.com

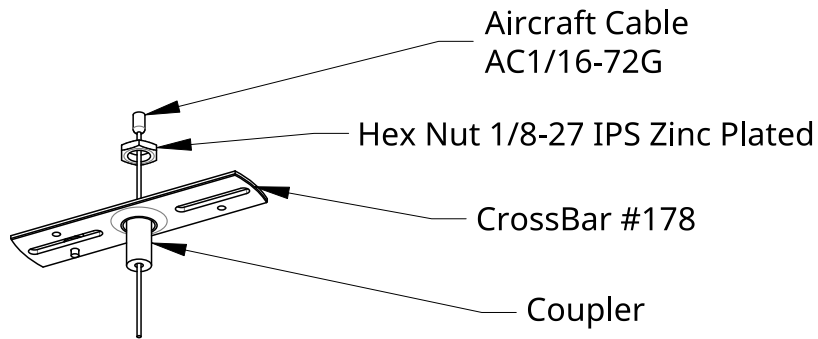
+1 212 388 1621

support@RBW.com

© RBW Studio LLC, 2013, 2020

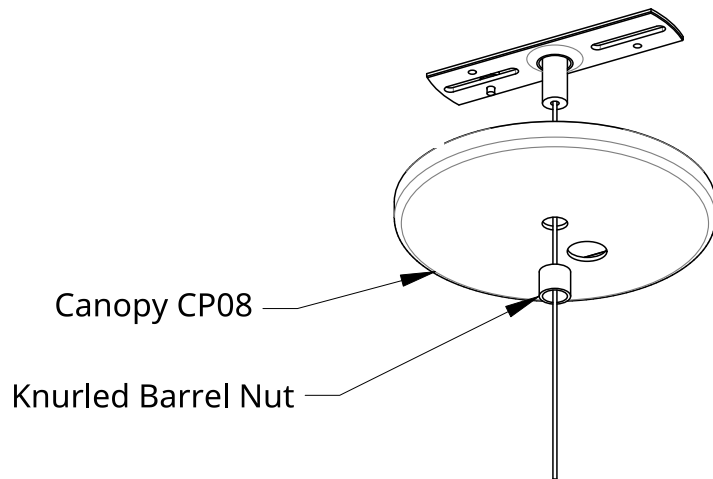


Item	Qty	Part number	Description
1	1	10795	Canopy CP08, White
2	1	10782	CrossBar #178/#58
3	1	12619	2 Piece Cable Coupler
4	1	10878	Heyco Strain Relief 1801
5	1	10869	Hex Nut 1/8-27 IPS Zinc Plated
6	1	92597A800	8-32 x 5/16" Electrical Grounding Screw



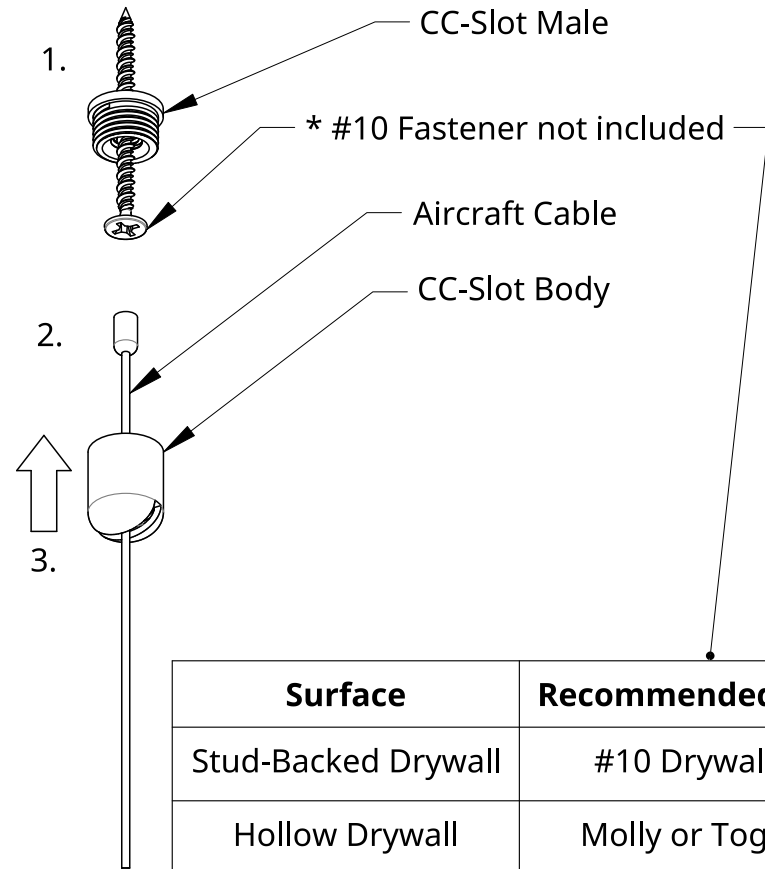
Installation - Crossbar

1. Thread Coupler into Crossbar.
2. Add Hex Nut and Cable.
3. Screw Crossbar into junction box.



Installation - Canopy

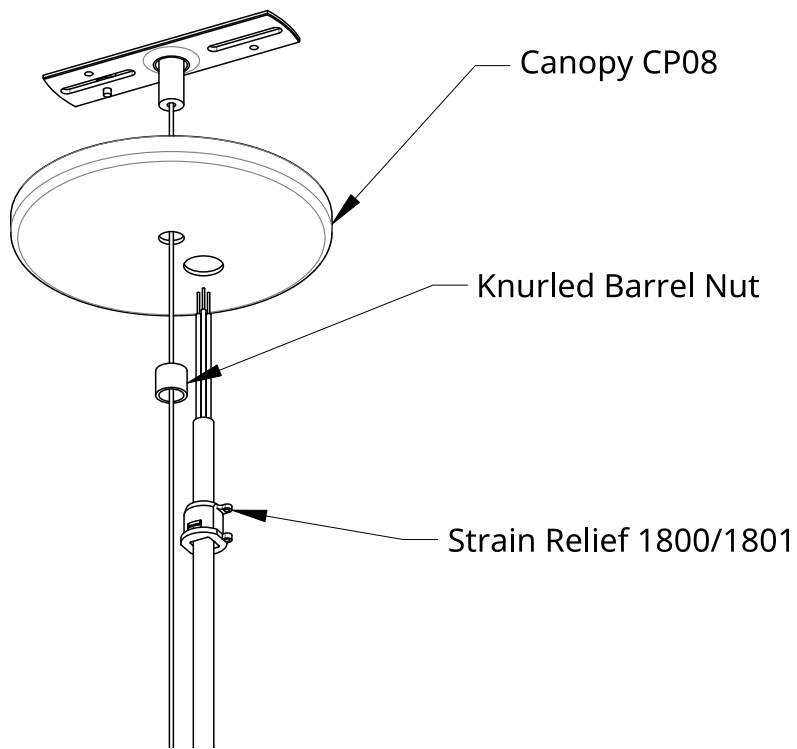
4. Place Canopy on Coupler at ceiling.
5. Screw Knurled Barrel Nut onto Coupler to retain Canopy.
6. Do not trim cable at this time.



Surface	Recommended Fastener
Stud-Backed Drywall	#10 Drywall Screw
Hollow Drywall	Molly or Toggle Bolt
Concrete Slab	10-24 Expanding Anchor
Wood	#10 Wood Screw

Installation - CC-Slot Coupler

7. Use appropriate fastener to secure CC-Slot Male to desired mounting location.
8. Pass Aircraft Cable through CC-Slot.
9. Thread CC-Slot onto CC-Slot Male to secure Aircraft Cable in the Coupler.
10. Raise luminaire and feed Aircraft Cables into corresponding grippers.
11. Adjust to desired drop height, trim excess Cable.



Installation - Aircraft Cables

12. Unthread Knurled Barrel Nut and lower Canopy.
13. Insert cord into Strain Relief.
14. Insert cord and Strain Relief into Canopy.
15. Connect wires from cord to power.
16. Raise Canopy and Knurled Barrel Nut into place.
17. Check height and adjust to level. Trim cables.
18. Congratulations! End of guide.